



MORTON & PITALO, INC.
 CIVIL ENGINEERING • LAND PLANNING • LAND SURVEYING
 LANDSCAPE ARCHITECTURE • TRAFFIC ENGINEERING
 72 Iron Point Circle, Suite 100 • Folsom, CA 95630
 phone: 916.984.7421 • fax: 916.984.9617 • survey fax: 916.563.6770
 survey email: staking@mpengr.com • web: www.mpengr.com

CONSULTANT

APPROVALS

NO	DATE	DESCRIPTION

REVISIONS

BENCH MARK

ELEV = 112.83

3-1/4" BRASS DISC STAMED LS5614, TOP OF CURB

WEST SIDE OF DI @ SE CORNER OF WASHINGTON BLVD. &

ROSEVILLE PARKWAY @ NE END OF CURB RETURN

COMPUTED BY

DESIGNED BY

DRAWN BY

PROJECT ENGINEER

PROJECT

GJB

GJB

GJB

GJB

GJB

GJB

GJB

GJB

GJB

GJB

GJB

GJB

GJB

GJB

GJB

GJB

GJB

GJB

GJB

GJB

GJB

GJB

GJB

GJB

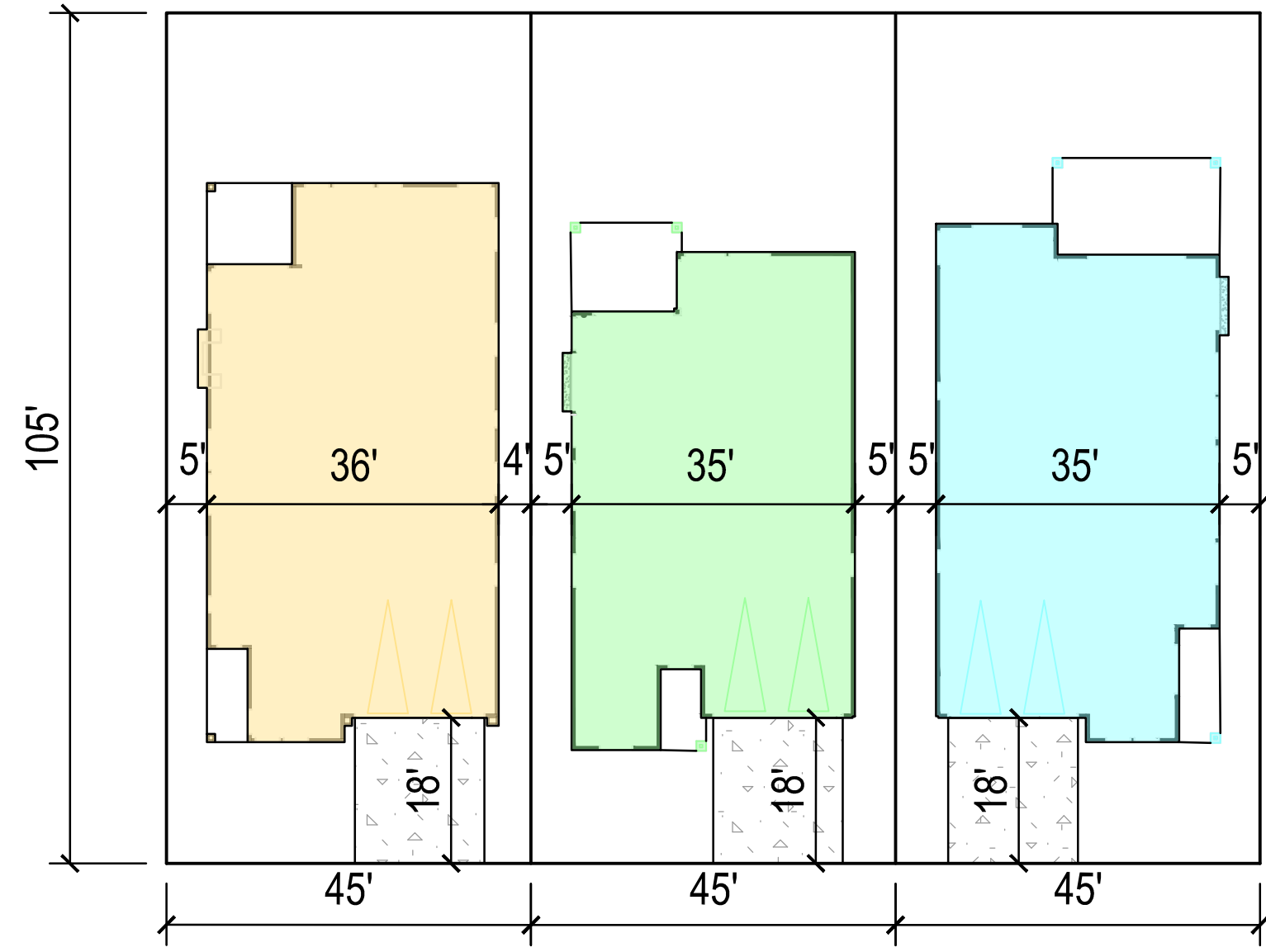
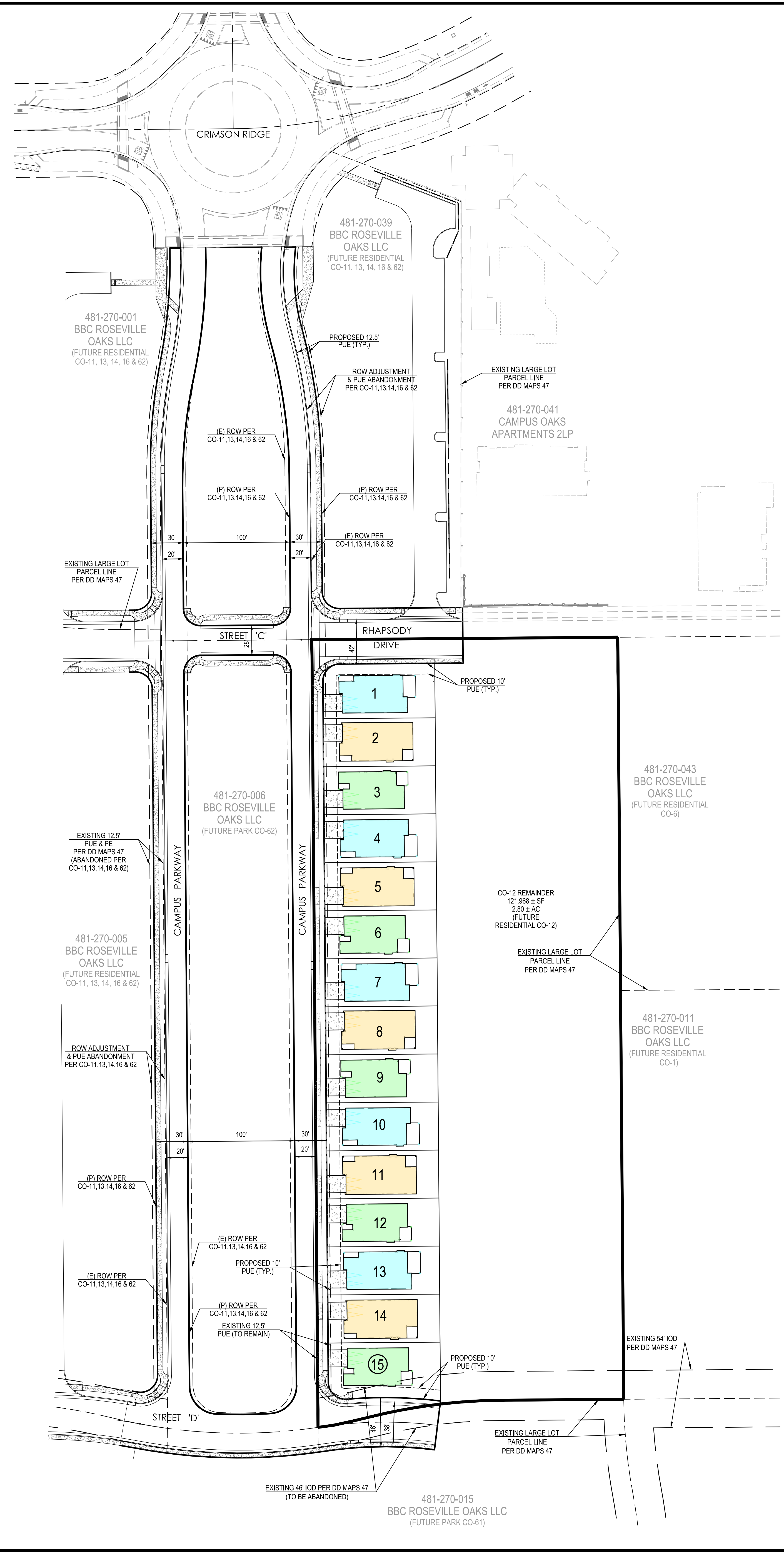
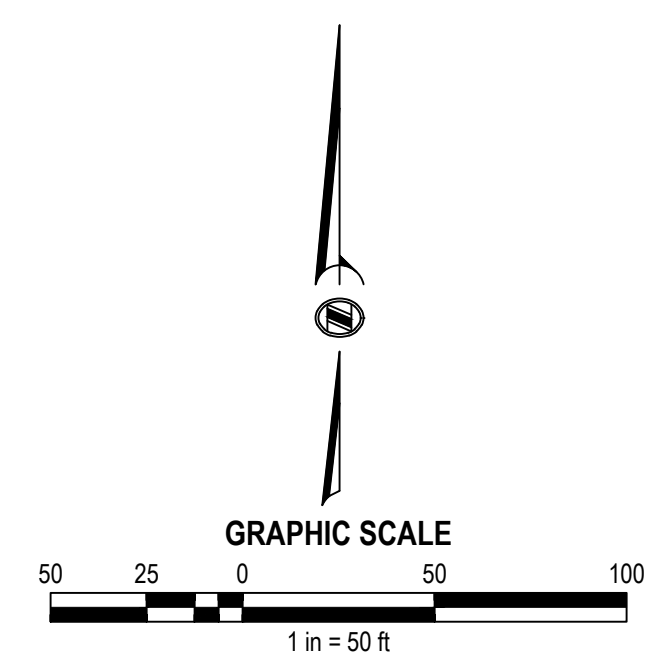
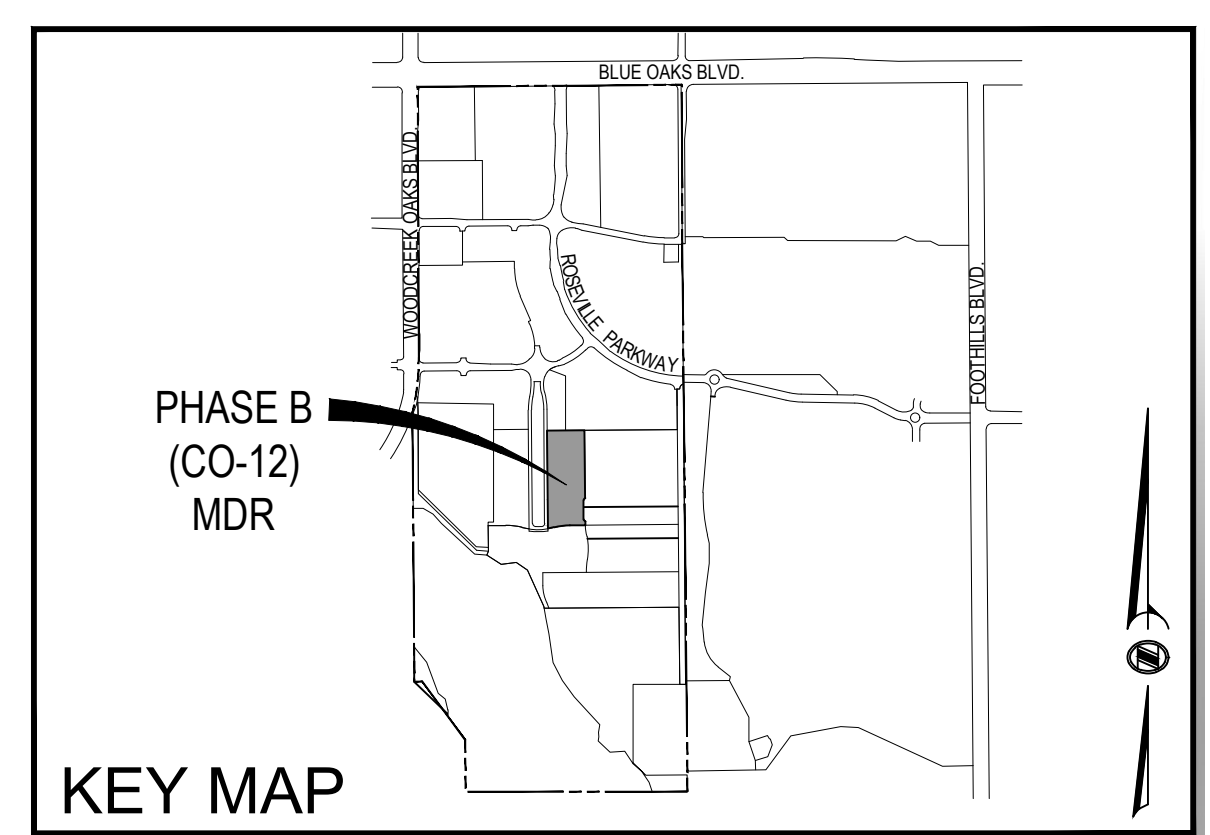
GJB

GJB

GJB

GJB

SITE DEVELOPMENT PLAN
 CAMPUS OAKS
 MASTER PLAN - PORTION OF 12
 SHEET 1 OF 1



PLAN 1	PLAN 2	PLAN 3
1,863 S.F.	2,798 S.F.	3,364 S.F.
5 LOTS	5 LOTS	5 LOTS
LOT MIX		

ENTITLEMENT DRAWINGS FOR
**CAMPUS OAKS
 MASTER PLAN**
 CO-1, 2, 6, 7, 12, 24, 61, 63 & 64
PHASE B
 ROSEVILLE, CA

SITE DEVELOPMENT PLAN

DATE	SHEET
JULY 5, 2019	1
SCALE	1"=50'
JOB NUMBER	13-0076-03
OF	1

City of Roseville Approval

NOT FOR CONSTRUCTION